

Alfa Laval BLES402BS

Specifications

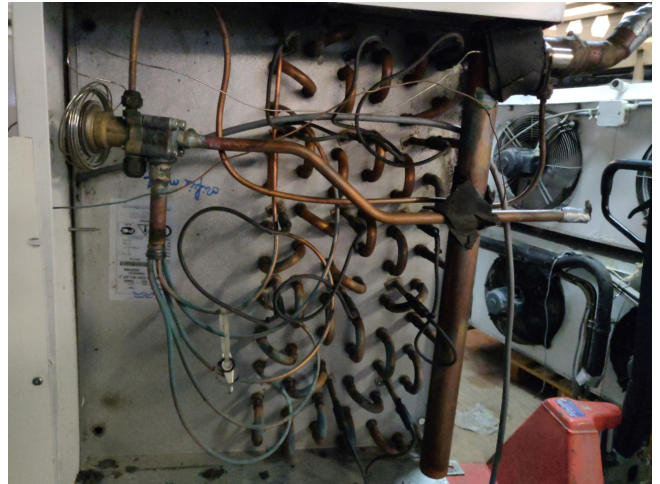
Brand	Alfa Laval
Type	BLES402BS
kW	15.9
Refrigerant	Freon
Number of Fans	2
Fin Space in mm	7
Defrosting	Electric
m ³ /h	6403
Remarks	YOB 2010
Volume	9.4dm ³
Weight	72kg
Stock	1



Description

Used Alfa Laval BLES402BS

Used but well maintained Alfa Laval BLES402BS 230V BO AP_E with 2 fans, 6.403m³/h, 9.4dm³, weight 72kg YOB 2010. "*Why choose for HOSBV? Were not only the largest used refrigeration specialist in Europe, but also, we deliver all equipment including an extensive test, warranty and industrial cleaning. Optional we can arrange shipment and export documents."





Model	Capacities R404A DX			Fan data							Connections		
	room temp. 0 °C	evap. temp. -8 °C	SC2* kW	nr.	power supply V/ph	fan power W	air throw m	sound press. dB(A)	air flow m³/h	coil surface m²	Int. volume dm³	in	out mm
GLEH													
Fin spacing 4 mm													
251A	2.5	2.0	1	230/1	150	13.3	56	1435	12.8	1.3	1/2"	12	
251B	3.4	2.5	1	230/1	150	12.8	56	1371	19.2	2	1/2"	12	
252A	5.0	4.0	2	230/1	300	15.0	59	2870	25.6	2.7	1/2"	22	
252B	6.9	5.1	2	230/1	300	14.6	59	2742	38.4	4	1/2"	22	
253A	7.3	6.0	3	230/1	450	16.1	61	4306	38.4	4	1/2"	22	
253B	10.2	7.7	3	230/1	450	15.6	61	4113	57.7	6	1/2"	22	
351A	4.0	3.2	1	230/1	150	16.3	49	2375	21.4	2.2	1/2"	22	
351B	5.5	4.2	1	230/1	150	15.5	49	2219	32.0	3.4	1/2"	22	
352A	8.3	6.6	2	230/1	300	18.8	52	4749	42.7	4.5	1/2"	28	
352B	10.6	8.3	2	230/1	300	17.9	52	4438	64.1	6.7	1/2"	28	
353A	12.4	10.0	3	230/1	450	20.2	54	7124	64.1	6.7	1/2"	28	
353B	16.5	12.7	3	230/1	450	19.4	54	6657	96.1	10.1	5/8"	28	
354A	16.4	13.3	4	230/1	600	21.2	55	9498	85.4	9	5/8"	35	
354B	21.6	16.7	4	230/1	600	20.4	55	8876	128.1	13.4	5/8"	35	
401B	7.8	5.9	1	230/1	160	19.0	51	3178	43.8	4.6	1/2"	28	
401C	9.1	6.7	1	230/1	160	18.3	51	3014	58.4	6.1	1/2"	28	
402B	15.9	12.1	2	230/1	320	21.0	54	6062	90.0	9.8	5/8"	35	
402C	18.9	13.8	2	230/1	320	21.2	54	6081	119.9	12.6	5/8"	35	
403B	23.8	18.2	3	230/1	480	23.5	56	9626	136.1	14.3	22	42	
403C	28.0	20.7	3	230/1	480	22.8	56	9148	181.5	19	22	42	
401B	8.4	6.5	1	400/3	420	22.0	53	3830	43.8	4.6	1/2"	28	